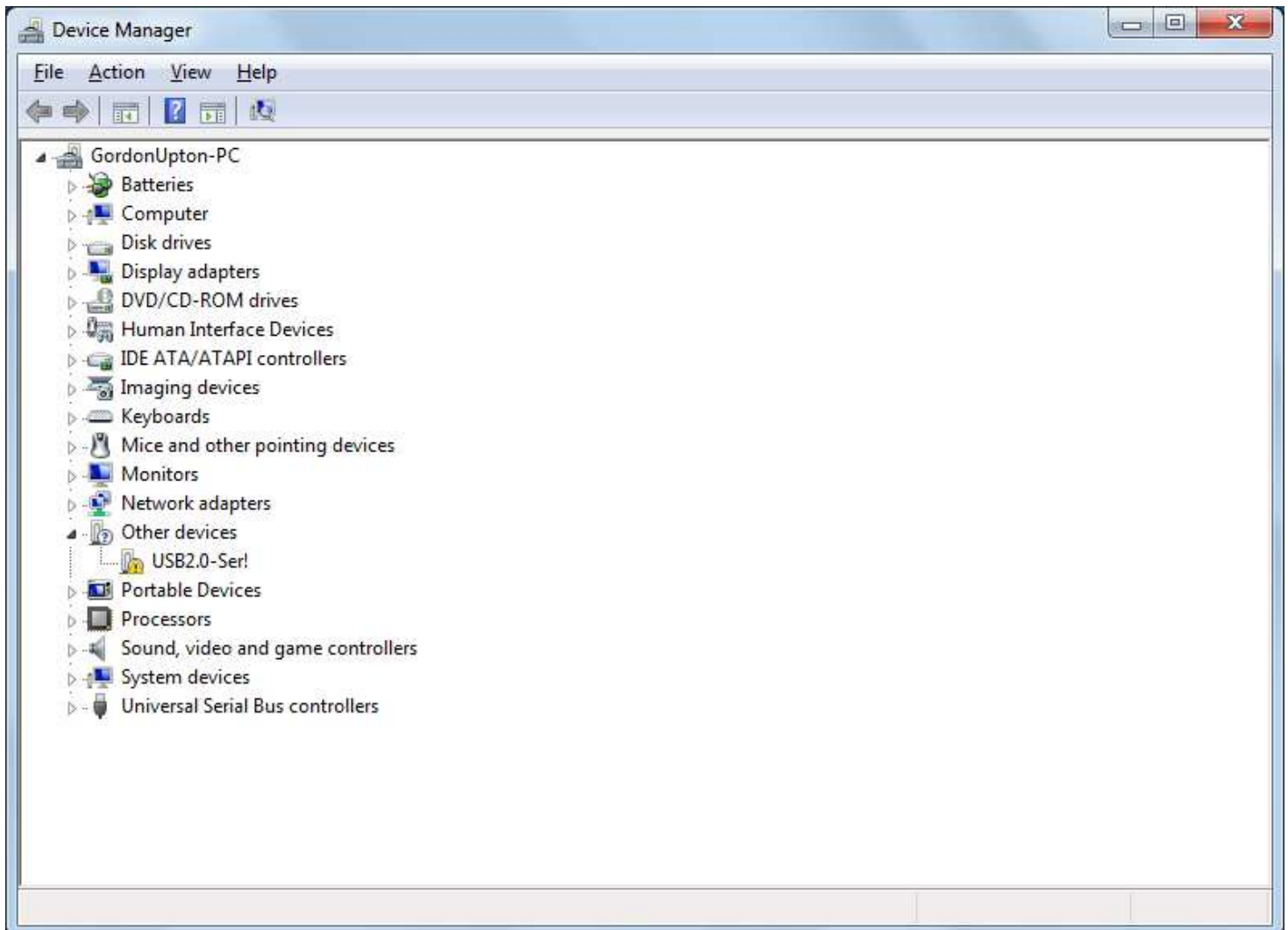
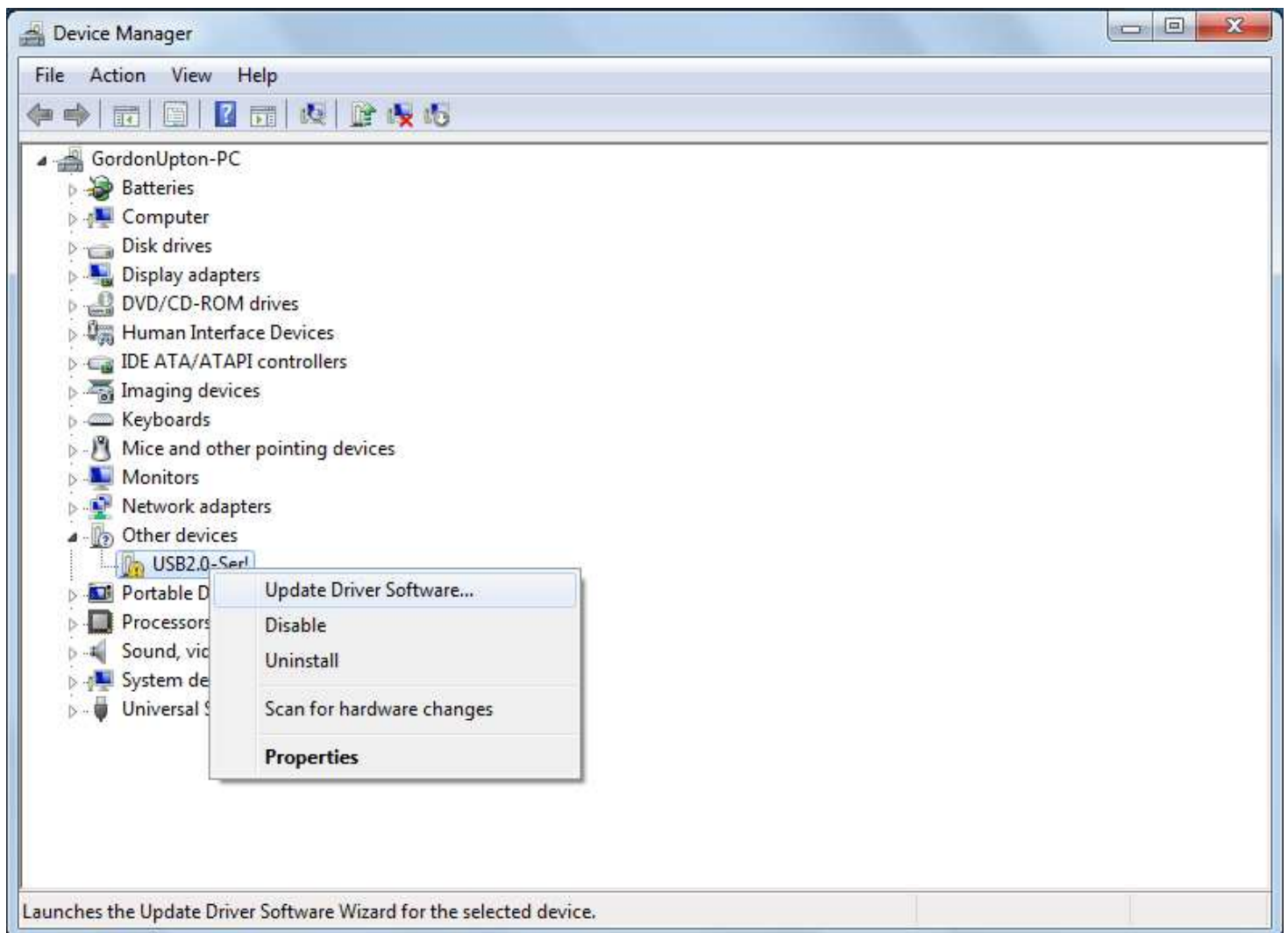


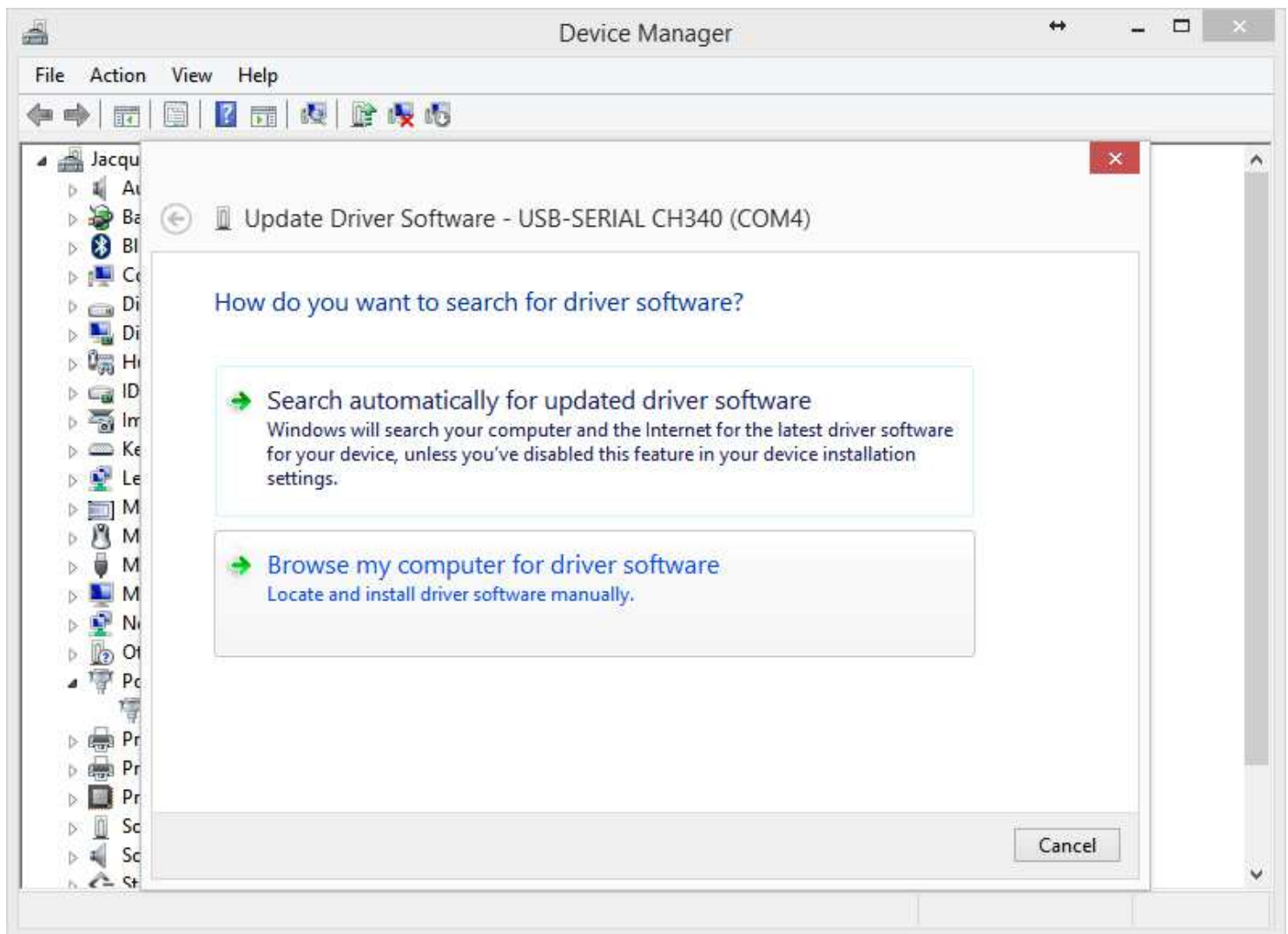
1. Plug the USB to RS232 converter into the Windows PC.
2. Go to Device manager. (located in control panel)
3. Under the Other devices drop-down should be "USB.2.0-Ser!"



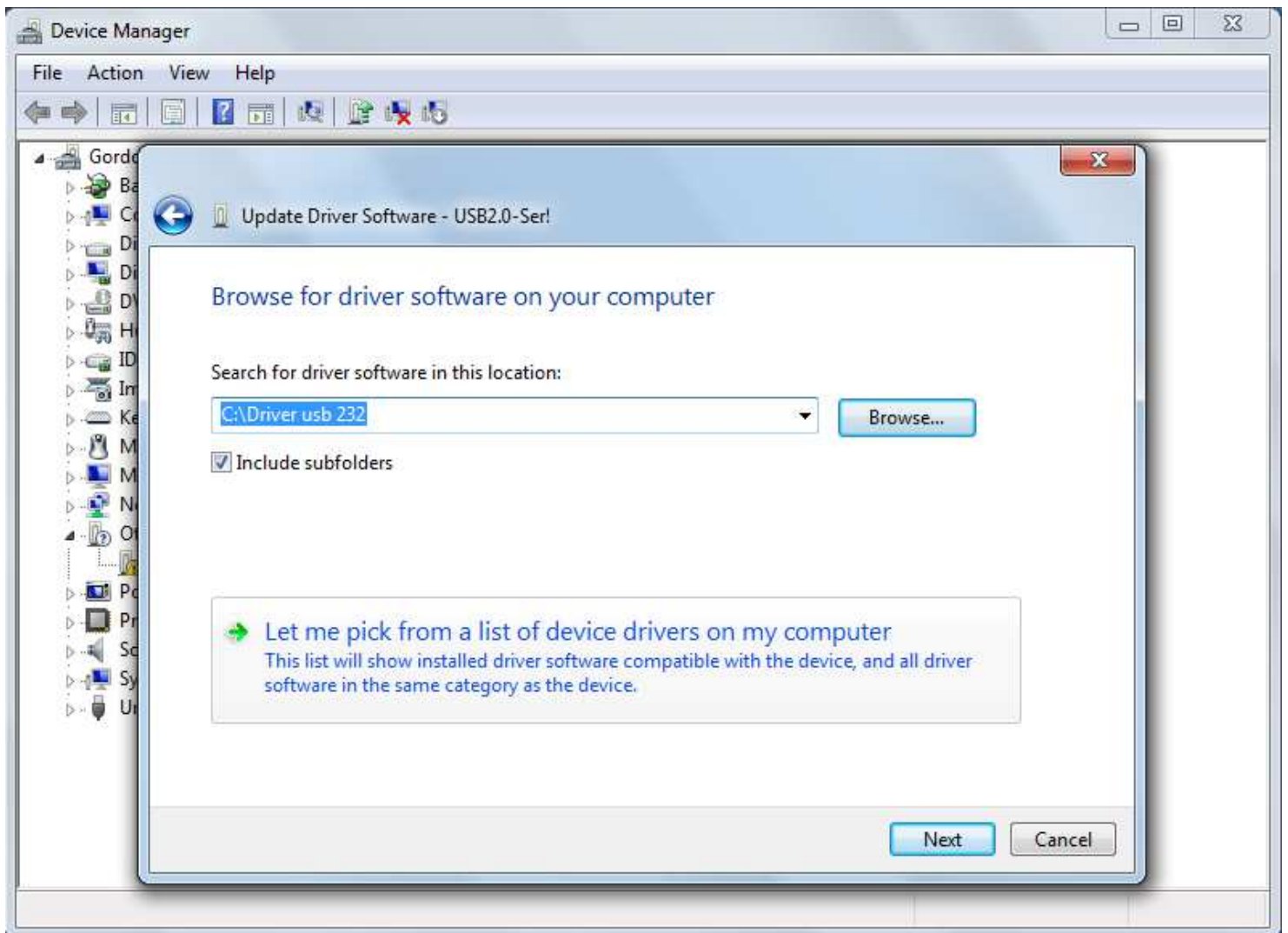
4. Right click on "USB.2.0-Ser!"
5. Click on "Update Driver Software..."



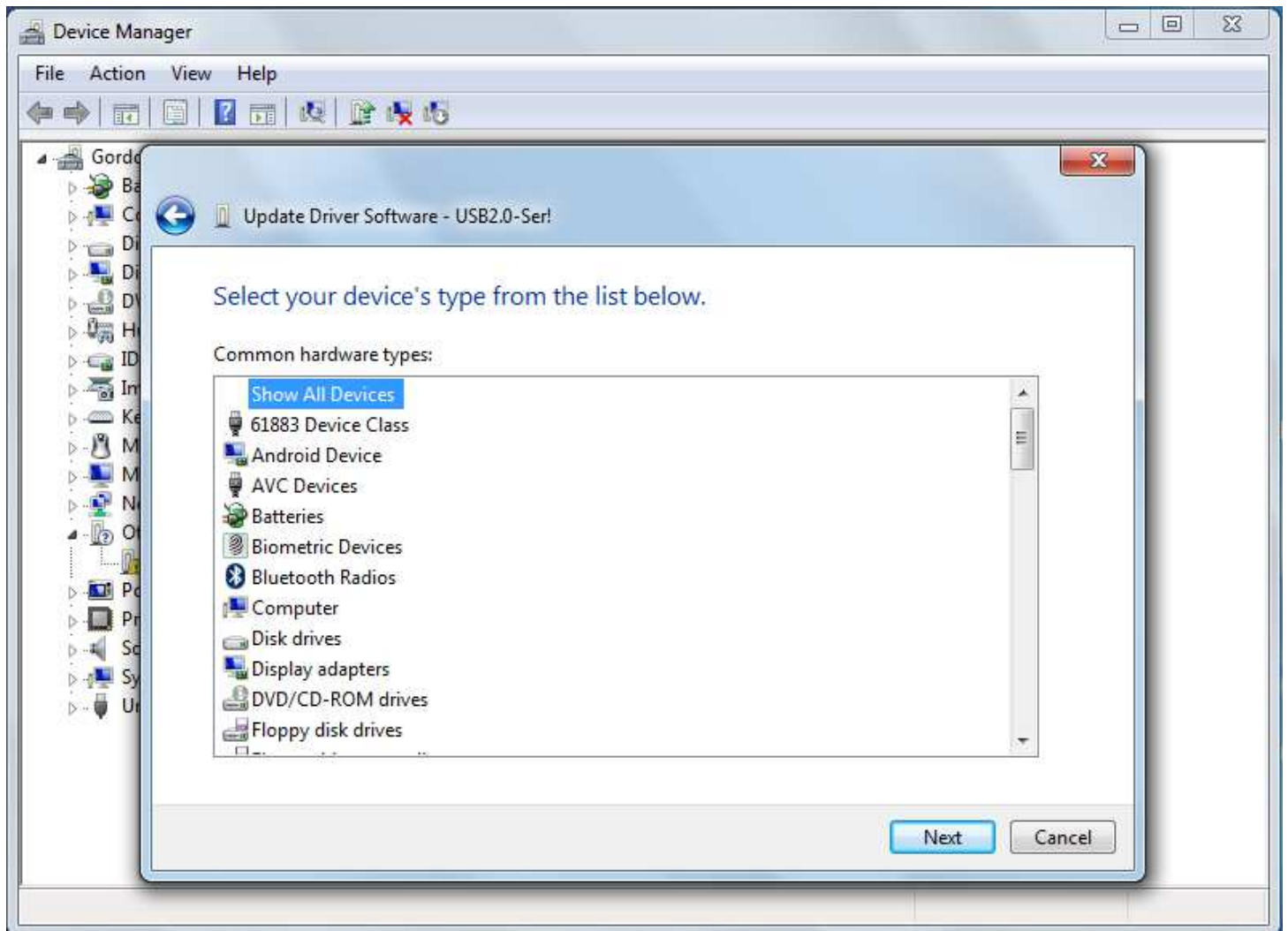
6. Click on "Browse my computer for driver software"



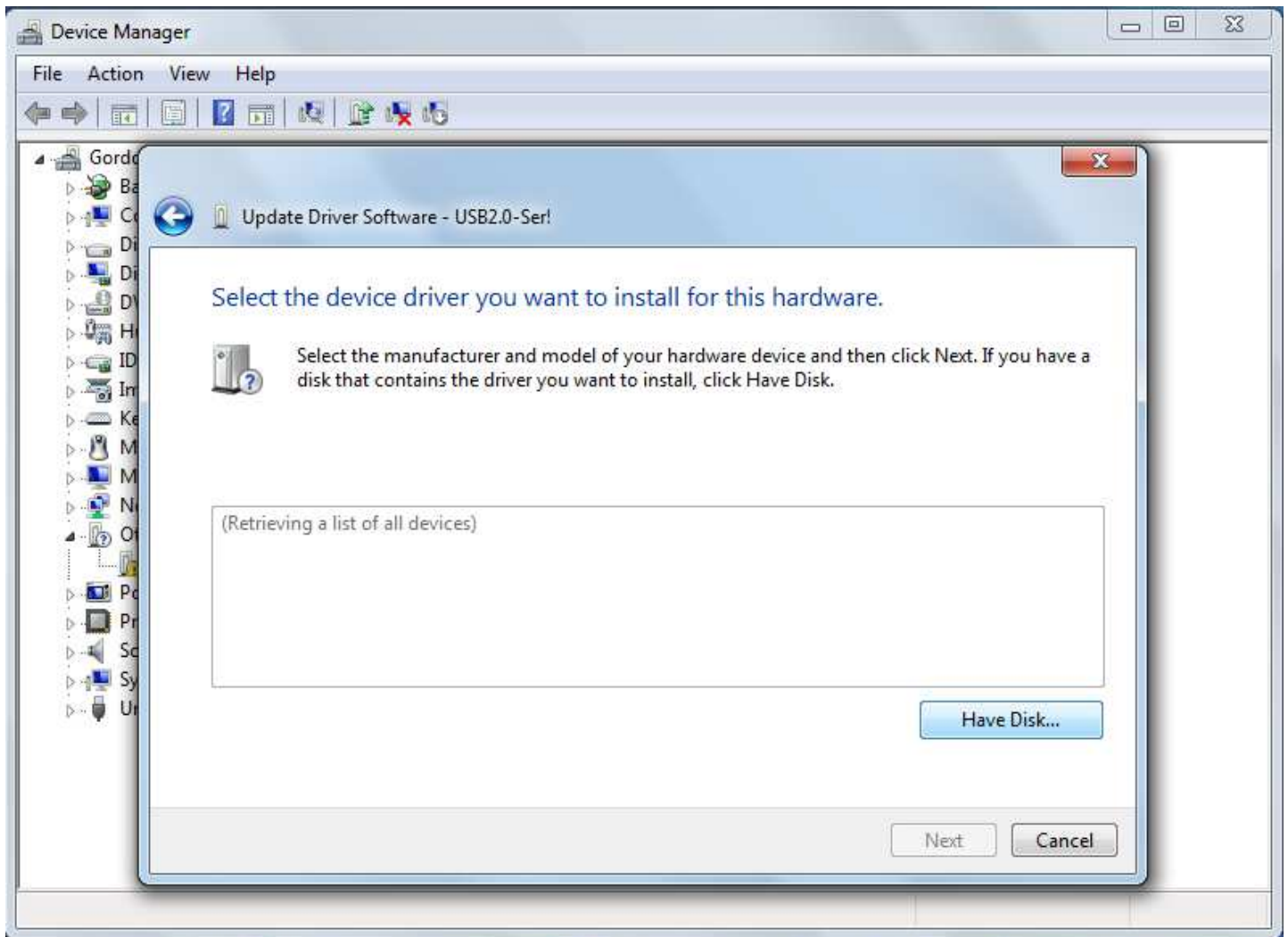
7. Click on “Let me pick from a list of device drivers on my computer”



8. Click on "Show All Devices"
9. Click on "Next"

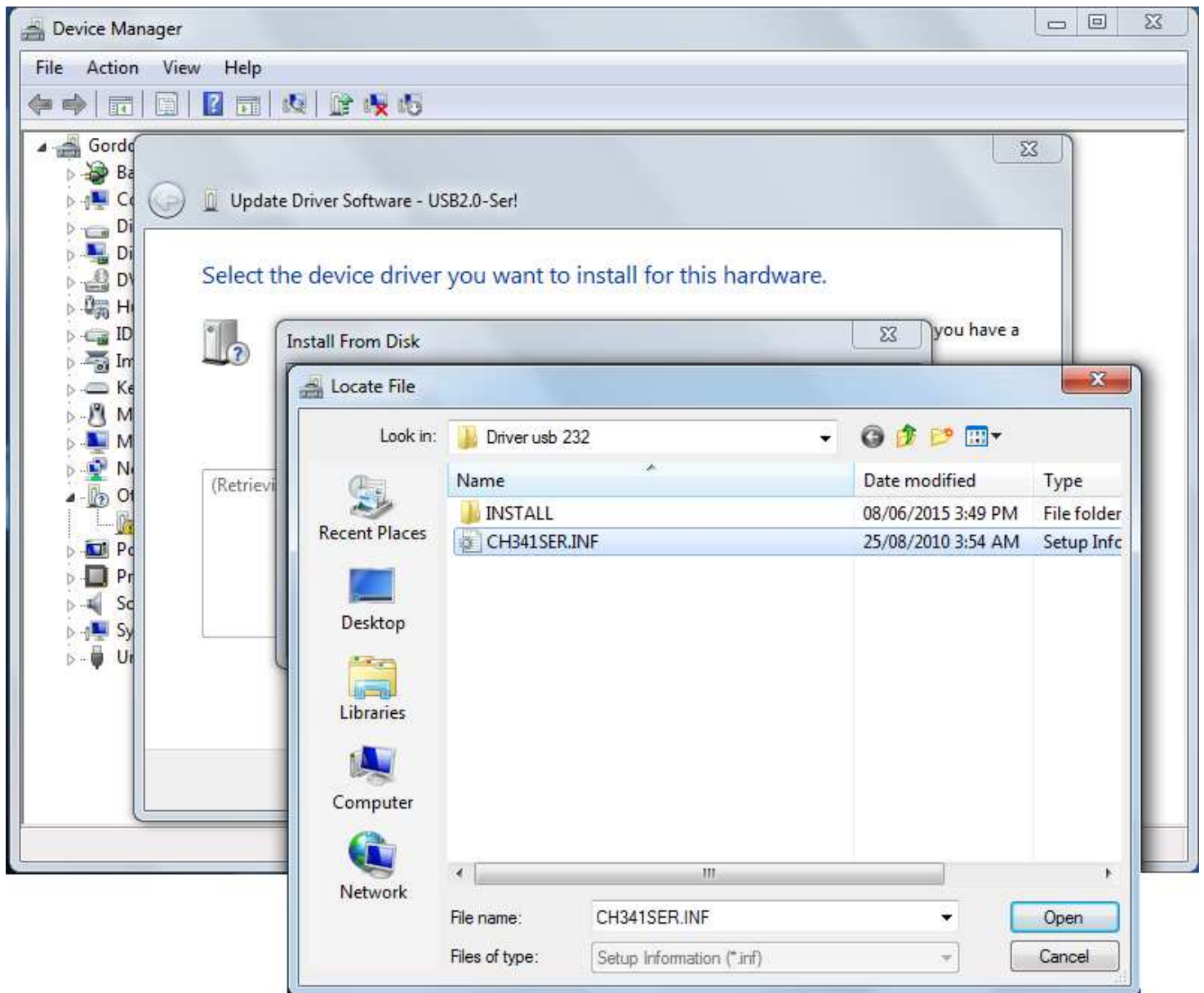


10. Click on "Have Disk..."



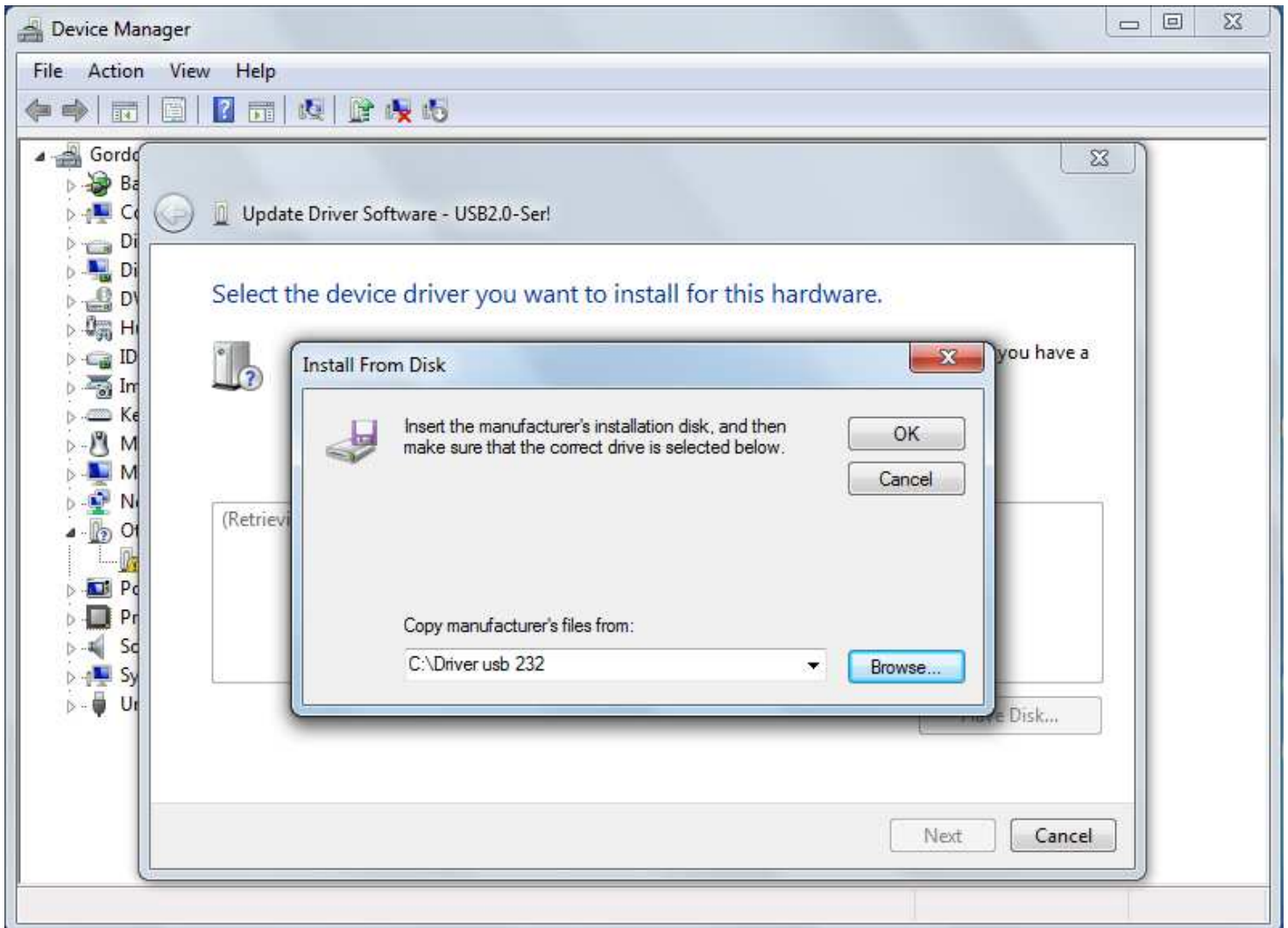
11. Navigate and select "CH341SER.INF" file provided.

12. Click on "Open"



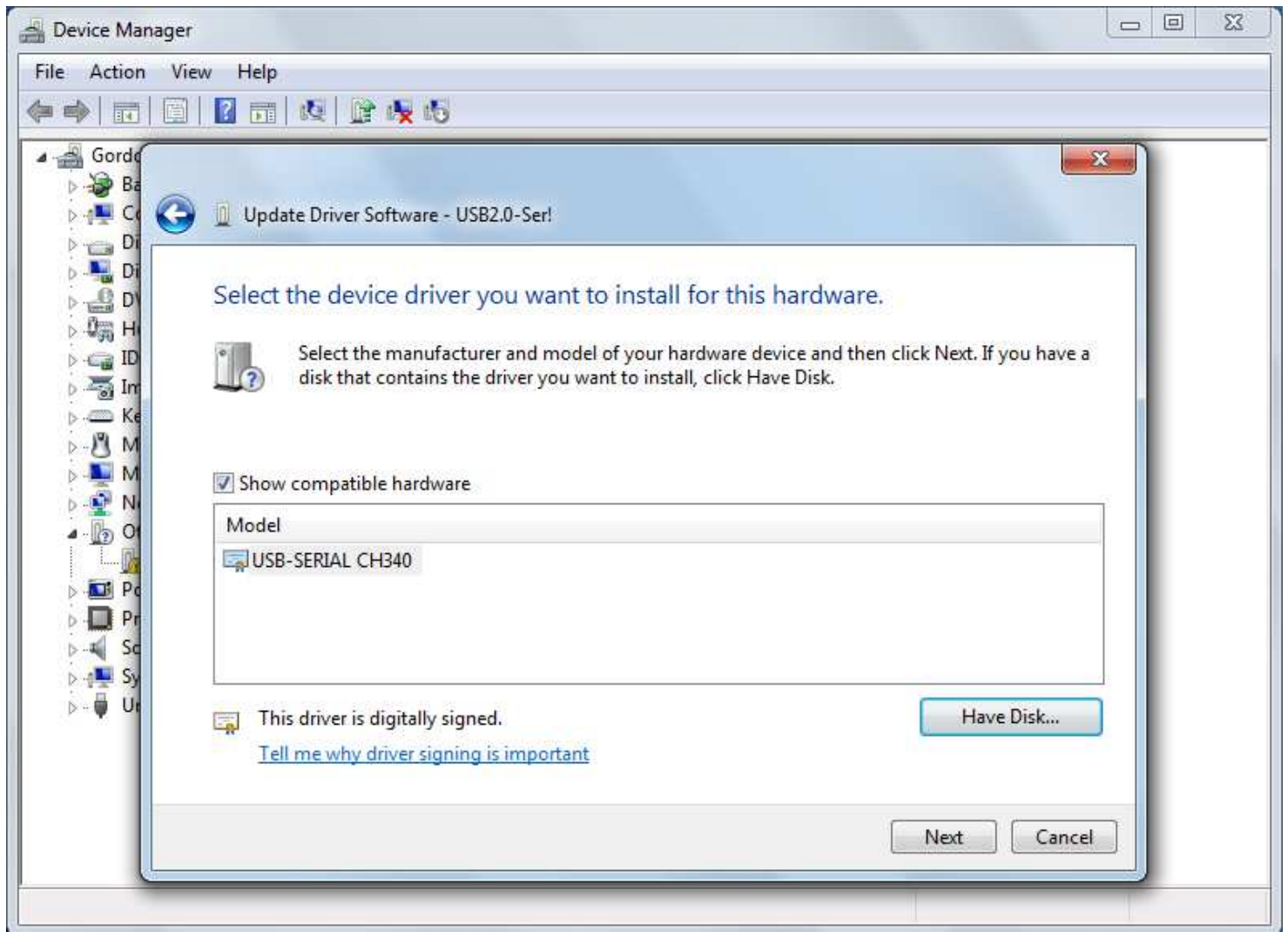


13. Click on "OK"

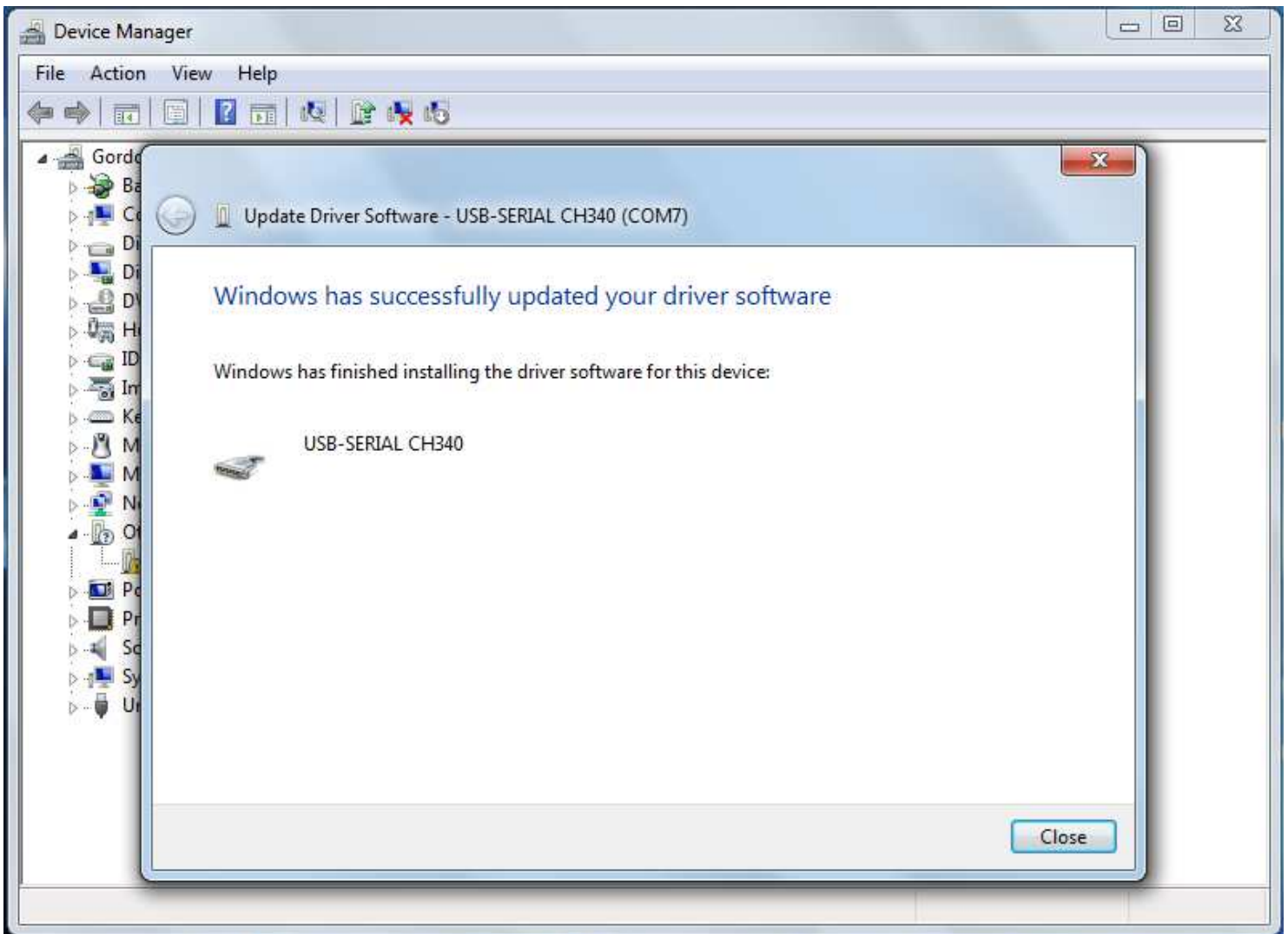




14. Click on "Next"



15. Click on "Close"



16. If installation was successful “USB-SERIAL CH340” will now be visible under the Port dropdown.

